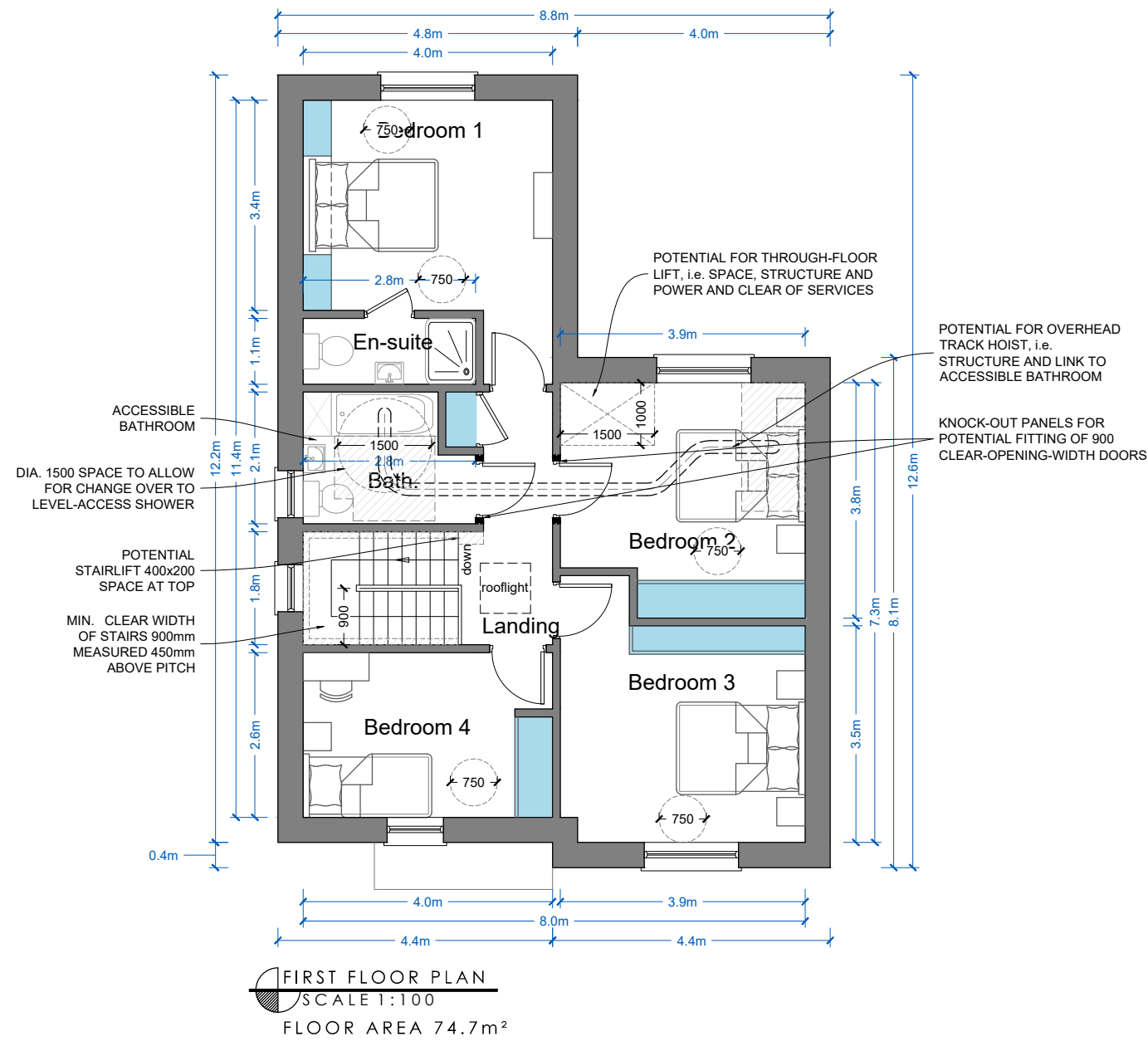
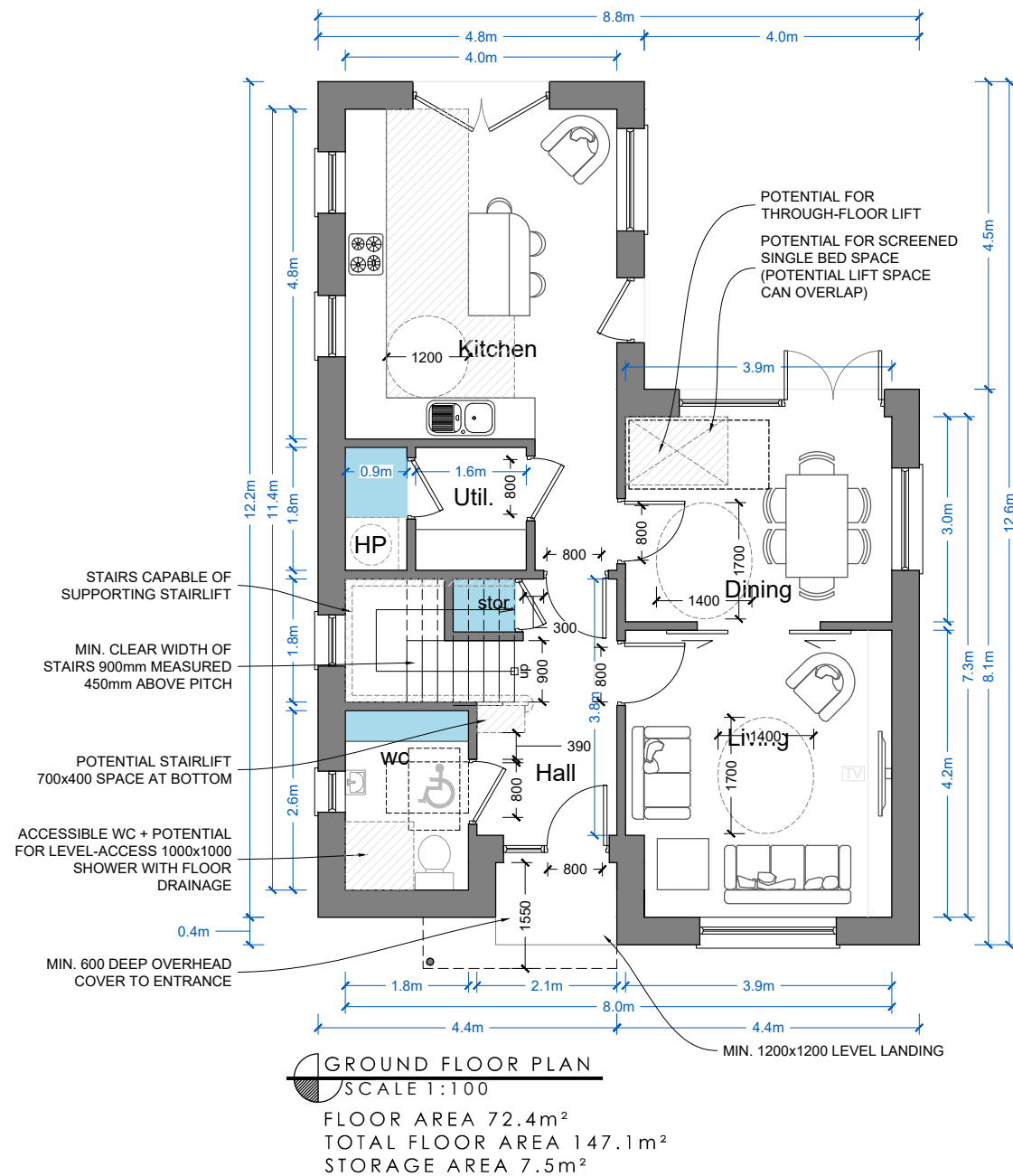


All dimensions to be checked on site. Figured dimensions take preference over scaled dimensions. Any errors or discrepancies to be reported to the Architects. This drawing may not be edited or modified by the recipient.

"Copyright and ownership of this drawing is vested in STRUTEC, whose prior written consent is required for its use, reproduction or for publication to any third party. All rights reserved by the law of copyright and by international copyright conventions are reserved to STRUTEC and may be protected by court proceedings for damages and/or injunctions and costs."

### NOTE

LEVELS, ORIENTATION AND SITUATION (E.G. DETACHED, SEMI-DETACHED OR TERRACED) VARY PER UNIT. REFER TO SITE PLAN FOR LEVELS, ORIENTATION AND SITE CONTEXT INFORMATION.



REV	DATE	REV BY	DESCRIPTION
-	-	-	-
STATUS <b>PLANNING</b>			
PROJECT <b>CREAGH STRATEGIC HOUSING RESIDENTIAL DEVELOPMENT</b>			
PROJECT ADDRESS <b>BALLOWEN/RAMSFORTPARK, GOREY, CO. WEXFORD</b>			
DWG TITLE <b>HOUSE TYPE A: ADAPTABLE ACCESSIBILITY FLOOR PLANS</b>			
DWG NO <b>PL2-510</b>			REV <b>-</b>
JOB NO <b>1725</b>		SCALE @ A3 <b>1:100</b>	
DATE <b>30.11.2018</b>		DRN <b>Liam Minogue</b>	
		STRUTEC, Architectural & Engineering Consultants, Garryhill, Bagenalstown, Co. Carlow, R2 KP44 Ireland Tel +353 (0)59 97 27623 W www.strutec.ie E info@strutec.ie	